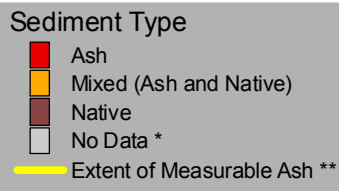
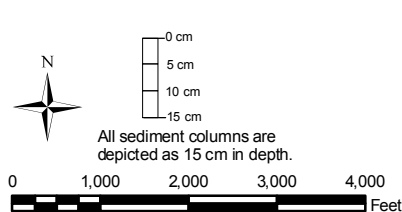
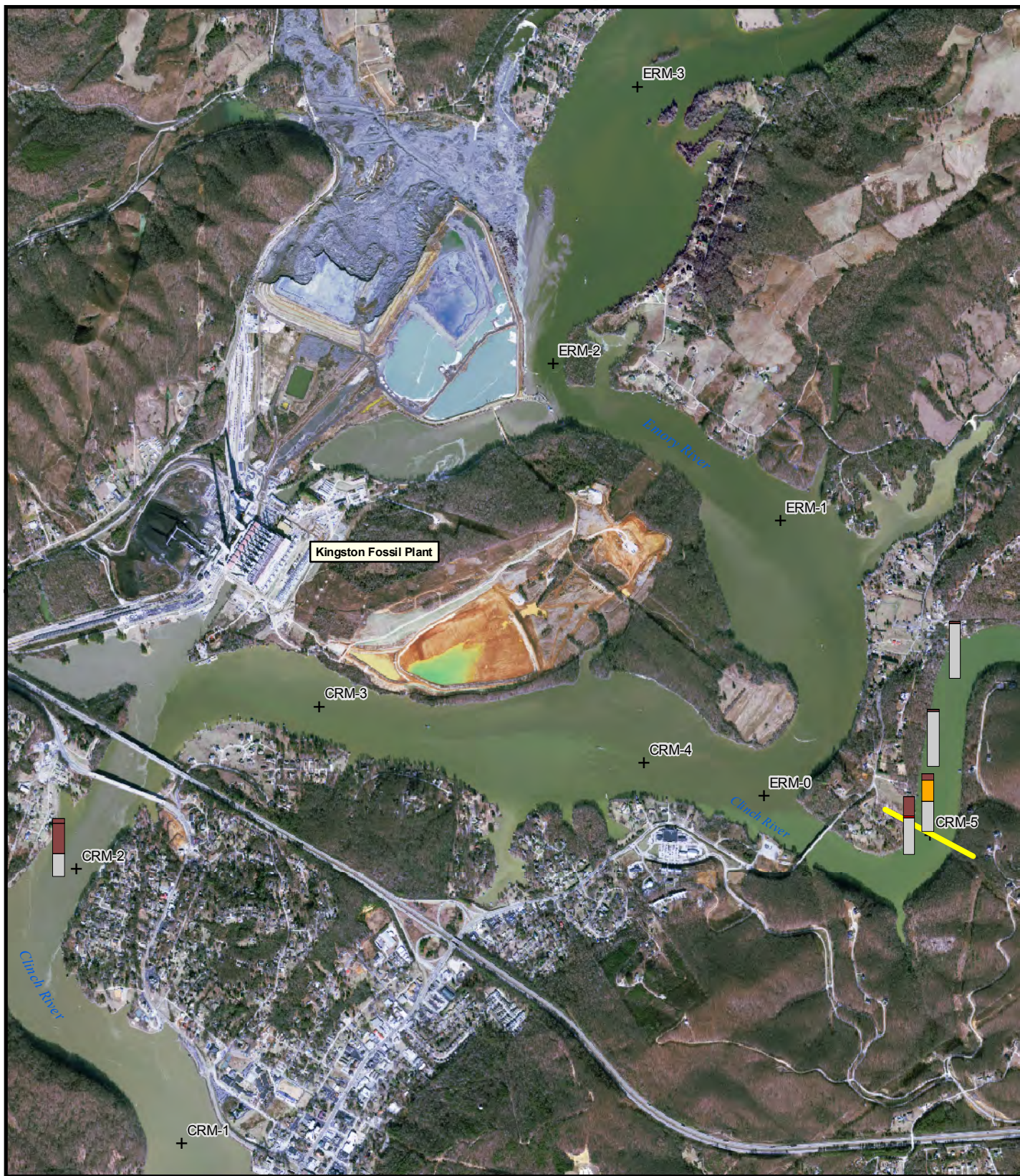


Nature and Extent of Ash in the Clinch River Bottom as of August 5, 2009 (Phase 1)



* No Data means incomplete recovery of sediment sample.
 ** Extent of Measurable Ash is defined as mostly contiguous ash that is at least 1/4 inch thick. Some samples beyond the extent line may contain traces of ash.
 All sample points taken from box corer which has maximum recovery depth of 8 inches.
 The location of sediment columns depicted are approximate in order to visualize on map.

Date of map imagery:
 January 09, 2009

Core data:
 July 28 - August 5, 2009

Tennessee Valley Authority
 OE&R - ER&S
 Geographic Information & Engineering